



WAMA ELECTRONICS TECH CO.,LTD

Chemical System : Coin Type Manganese Dioxide Lithium battery

Model No. : CR1632

Nominal Dimensions: $\Phi 16.0 \times 3.2\text{mm}$

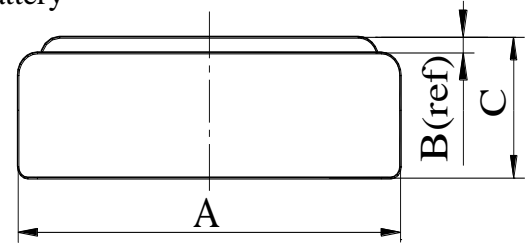
Nominal Voltage : 3.00V

Average Weight : 1.4g

Applications : Watch, calculator, electronic toy, etc.

Shelf Life : Not less than 95% of the service capacity, following 1st year storage at 20°C.

Standard Capacity : 145mAh (continuous discharge at 20°C under 0.10mA discharge current to 2.0V voltage)



Dimensions	Unit: mm
A	15.80----16.00
B	0.30(ref)
C	3.00----3.20

