



WAMA ELECTRONICS TECH CO.,LTD

Chemical System : Coin Type Manganese Dioxide Lithium battery

Model No. : CR1620

Nominal Dimensions: $\Phi 16.0 \times 2.0\text{mm}$

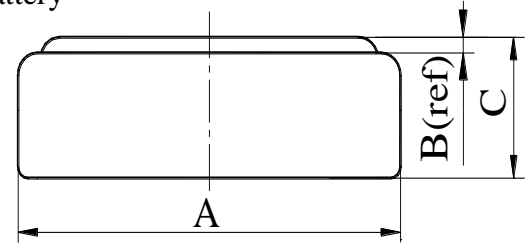
Nominal Voltage : 3.00V

Average Weight : 1.4g

Applications : Watch, calculator, electronic toy, etc.

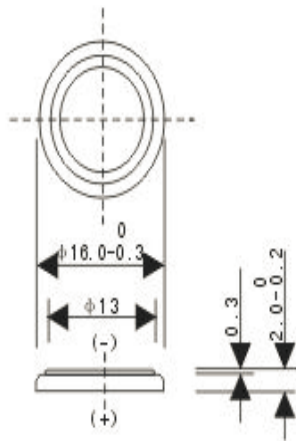
Shelf Life : Not less than 95% of the service capacity, following 1st year storage at 20°C.

Standard Capacity : 70mAh (continuous discharge at 20°C under 0.10mA discharge current to 2.0V voltage)

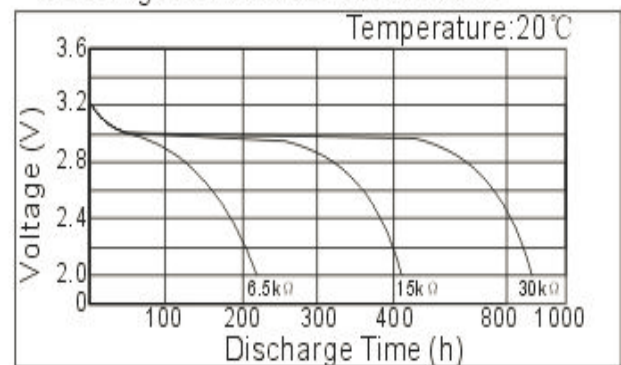


CR1620

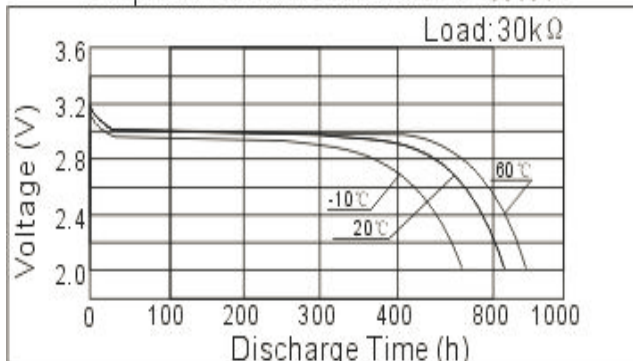
标准电压 Nominal Voltage	3V
标准容量 Nominal Capacity	70mAh
负载电阻 Load Resistance	30kΩ
重量 Weight	1.4g



Discharge Characteristics / 放电特性



Temperature Characteristics / 温度特性



Load-Capacity / 负载容量

