

WAMA ELECTRONICS TECHNOLOGY CO.,LTD

ALKALINE MANGANESE BATTERY

1.Other name for the same type

L1325,4LR44,A544,PX28A

2.Chemical System

Alkaline Zinc—Manganese battery (+) Zn|KOH|MnO₂(-)

3.Nominal Voltage: 6.0V

4.Average Weight: 9.97g

5.Nominal Capacity: 145mAh

(continuous discharge at 20±2°C under 0.22mA discharge current to 3.60V voltage)

6.Appearance: Metal Can

7.Electrical Characteristics:

7.1 Off—load Voltage:

New Battery≥6.05V

After 12 Months (Room Temp.)≥6.00V

7.2 Discharge Time(continuous discharge at 20±2°C under 7.5KΩ discharge load to 3.60V voltage)

New Battery≥190 hours

After 12 Months (Room Temp.)≥170 hours

7.3 Over—discharge Characteristic

Condition: 7.5KΩcontinuous discharge at 20±2°C & 65±20%R.H.

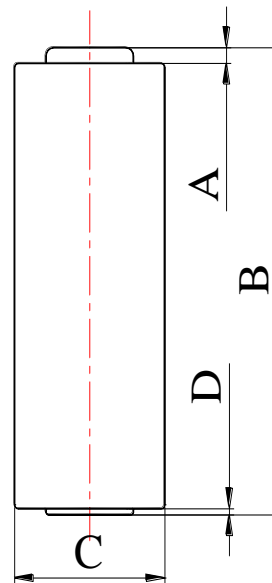
Period: 48hours

Characteristic: No deformation is over 0.20mm of the nominal dimension, and no visual electrolyte leakage

8. Dimensions:

Nominal Dimension: $\varnothing 13.00 \times 25.20$

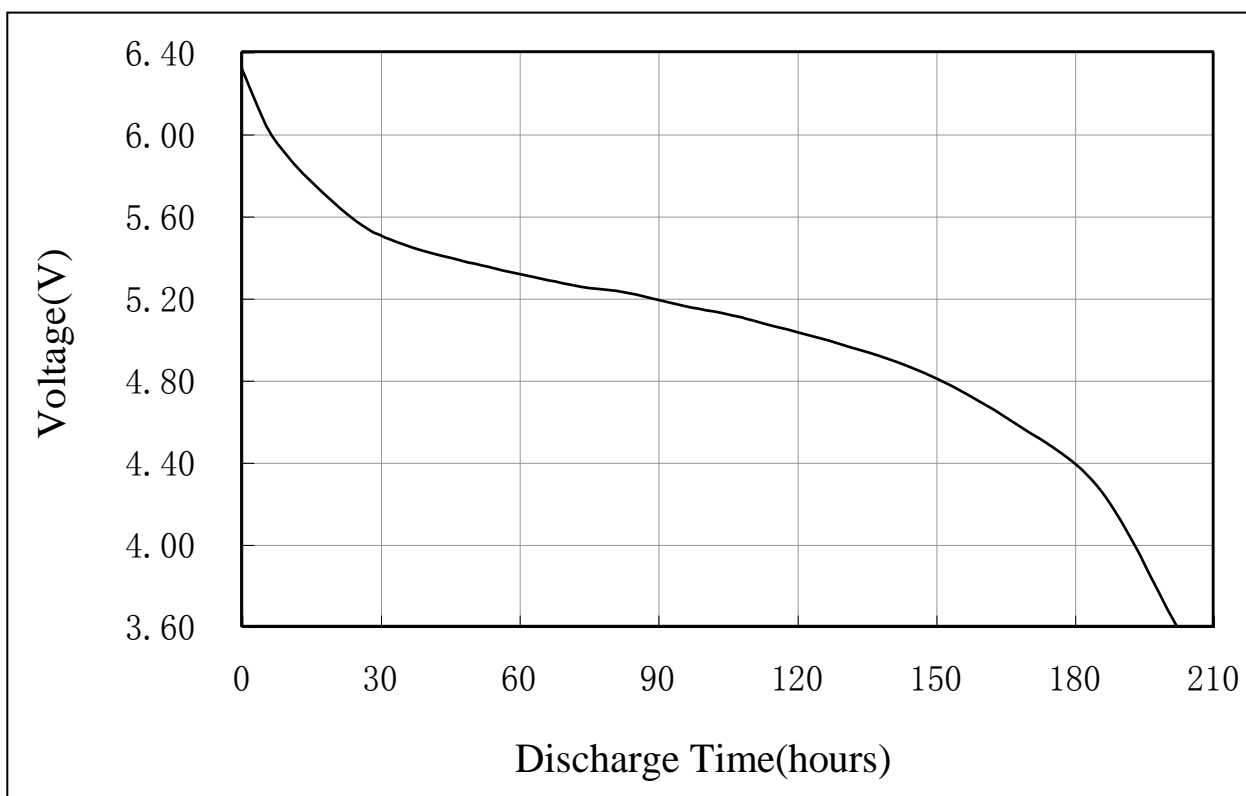
(Unit: mm)



Dimension	Range
A(ref.)	0.80
B	24.85 ± 0.25
C	12.70 ± 0.15
D(ref.)	0.20

9. Typical Discharge Characteristics

(continuous discharge at $20 \pm 2^\circ\text{C}$ under $7.5\text{K}\Omega$ discharge load to 3.60V voltage)



10. Mark:

The following message will be printed or stamped on the body of the battery:

10.1 Designation: 4LR44、 L1325 etc.

10.2 Manufacturer's name: WAMA ELECTRONICS TECHNOLOGY CO.,LTD

10.3 Trademark: no

10.4 Nominal Voltage: 6V.

10.5: Pole: “+” and “-”.

10.6 Warning: May explode or leak if charged or disposed of in fire.

11. Caution for use :

11.1 There are risks of electrolyte leakage or causing damage to the device if the battery is charged;

11.2 The battery shall be installed with “+”and “-” in correct position;

11.3 Short-circuiting and heating the battery、 disposing of the can must not be permitted.
